

Collateral imbalances in intra-European trade? Accounting for the differences between gross and value added trade balances*

Arne J. Nagengast

Robert Stehrer

Deutsche Bundesbank

WIIW

February 26, 2014

Abstract

One of the main stylised facts that has emerged from the recent literature on global value chains is that bilateral trade imbalances in gross terms can differ substantially from those measured in value added terms. However, the factors underlying the extent and sign of the differences between the two measures have so far not been investigated. Here, we propose a novel decomposition of bilateral gross trade balances that accounts for the differences between gross and value added concepts. The bilateral analysis contributes conceptually to the literature on double counting in trade by identifying the trade flow in which value added is actually recorded for the first time in international trade statistics. We apply our decomposition framework to the development of intra-EU27 trade balances from 1995 to 2011 and show that a growing share of intra-EU bilateral trade balances is due to demand in countries other than the two direct trading partners. The latter accounted for 25% of the total variance of intra-EU gross bilateral trade balances in 2011, which marks a considerable rise from 3% in 1995. A structural decomposition analysis indicates that this evolution was especially due to the rising importance of international production sharing.

Keywords: Trade balances; Global value chains; Vertical specialisation; Value added; Input-output tables

JEL classification: F1, F2, C67, R15

*Corresponding author: Arne Nagengast, Deutsche Bundesbank, Wilhelm-Epstein-Str. 14, Email: arne.nagengast@bundesbank.de. Discussion Papers represent the authors' personal opinions and do not necessarily reflect the views of the Deutsche Bundesbank. Comments by Thomas A. Knetsch (Deutsche Bundesbank) are gratefully acknowledged.

Non-technical summary

The availability of global input-output tables has sparked a growing literature on global value chains and has rendered it possible to compute the value added content of trade (Dietzenbacher et al., 2013; Johnson and Noguera, 2012; Koopman et al., 2014). One of the main stylised facts that has emerged from the recent literature on global value chains is that bilateral trade imbalances in gross terms can differ substantially from those measured in value added terms. Value added balances capture the difference between any two countries' domestically produced value added that is absorbed in final demand by their respective trading partner. In contrast to gross trade balances, they discount the part of trade flows that is double counted in official trade statistics (Koopman et al., 2014). The presence of marked cross-border production sharing can lead to considerable discrepancies between the two concepts. For example, Johnson and Noguera (2012) find that in 2004 the trade deficit of the US with Japan was approximately 33% larger when measured on a value added basis, whereas the US trade deficit with China was approximately 30-40% smaller. Value added measures of bilateral trade arguably better reflect which countries benefit from trade in terms of income and employment (Foster-McGregor and Stehrer, 2013; Timmer et al., 2013). In contrast, measures of bilateral trade flows based on gross concepts can lead to misjudging the influence of domestic demand and relative price adjustments on bilateral trade balances (Bems and Johnson, 2012).

Despite the importance of bilateral trade balances in policy debates, the factors underlying the extent and sign of the differences between the two measures have so far not been investigated. Here, we propose a novel decomposition of bilateral gross trade balances that accounts for the differences between gross and value added concepts. The bilateral analysis contributes conceptually to the literature on double counting in trade by identifying the trade flow in which value added is actually recorded for the first time in international trade statistics. We apply our decomposition framework to the development of intra-EU27 trade balances from 1995 to 2011. A major determinant of the difference that emerges – along with foreign value added – is demand in countries other than the two trading partners. The latter accounted for 25% of the total variance of intra-EU gross bilateral trade balances in 2011, which marks a considerable rise from 3% in 1995. A structural decomposition analysis indicates that this evolution was especially due to the rising importance of international production sharing.

Our results matter for policy as demand in third countries is by definition unaffected by domestic demand in the two trading partners, which is often one of the main targets for current account adjustments. Particularly in a currency union such as the euro area, it is important to establish with whom trade imbalances exist since the burden of adjustment may differ between trade deficits vis-à-vis member countries and third parties (di Mauro and Pappada, 2014). Even though their limitations are widely acknowledged gross bilateral trade balances still figure widely in the economic literature and policy debates (Davis and Weinstein, 2002; Bahmani-Oskooee and Brooks, 1999). Our paper provides a strong case for considering value added instead of gross bilateral trade balances since a sizable portion of gross bilateral trade balances is no longer under the influence of the direct trading partners themselves. Considering value added data is complicated by the fact that its release currently lags the publication of gross trade data by several years. Therefore, developing adequate tools and methods for forecasting value added trade flows based on current information is a promising area of future research.

1 Introduction

One of the main stylised facts that has emerged from the recent literature on global value chains is that bilateral trade balances in gross terms can differ substantially from those measured in value added terms, while aggregate trade balances are the same in both cases (Johnson and Noguera, 2012). Value added balances capture the difference between any two countries' domestically produced value added that is absorbed in final demand by their respective trading partner. In contrast to gross trade balances, they discount the part of trade flows that is double counted in official trade statistics (Koopman et al., 2014). The presence of marked cross-border production sharing can lead to considerable discrepancies between the two concepts. For example, Johnson and Noguera (2012) find that in 2004 the trade deficit of the US with Japan was approximately 33% larger when measured on a value added basis, whereas the US trade deficit with China was approximately 30-40% smaller. Value added measures of bilateral trade arguably better reflect which countries benefit from trade in terms of income and employment (Foster-McGregor and Stehrer, 2013; Timmer et al., 2013). In contrast, measures of bilateral trade flows based on gross concepts can lead to misjudging the influence of domestic demand and relative price adjustments on bilateral trade balances (Bems and Johnson, 2012).

While the importance of value added trade balances in economic theory and policy is beginning to gain recognition, the underlying factors that determine the sign and magnitude of the differences between the two concepts have so far not been investigated. The previous literature has generally ascribed discrepancies between gross and value added balances to different characteristics of international production networks such as triangular production sharing and the relative position of countries in global value chains (Johnson and Noguera, 2012; OECD, 2013). However, a mathematical framework that clarifies the relation between the two concepts at the bilateral level¹ is still lacking and hampers the interpretation of bilateral gross balances, which are currently the only data available in a timely manner. In this paper, we compute and analyse the proximate factors that account for the differences between gross and value added bilateral trade balances. In order to do so, we propose a novel decomposition of bilateral gross trade balances. This requires a conceptual framework that relates the bilateral value added and gross trade flows to each other. However it turns out that identifying the intersection between bilateral value added and gross trade flows is to a certain degree a matter of definition. We consider the two most parsimonious alternatives assigning value added trade to the first cross-border flow after production, in which it leaves the country of origin (source-based approach), or to the last cross-border flow before consumption, in which it enters the country where it is ultimately absorbed in final demand (sink-based approach). Hence, this paper contributes conceptually to the literature on double counting by identifying the trade flow in which value added is actually recorded for the first time in international trade statistics. In comparison to other decompositions suggested in the literature, we show that Koopman et al. (2014) implicitly use a variation of the source-based view when identifying value added exports in gross trade flows, but that their subdivision of value added exports is to some extent arbitrary and not based on the number of international border crossings.

Our decomposition framework identifies two quantities that explain the lion's share of the difference

¹Koopman et al. (2014) provide a decomposition of the *total* gross exports of a country into value added exports and six other components that are double counted in international trade statistics.

between gross and value added balances (other quantities like double counting and reflection are less important as shown below): (a) foreign value added absorbed by the two trading partners and (b) final demand in countries other than the two trading partners. The latter means that in a world of international production sharing the bilateral trade balance between two countries is to some degree a function of demand in the rest of the world.² The differences between the two quantities are of considerable importance, since - due to data availability - a majority of analyses currently still focuses on gross trade flows. For example, while both quantities in our decomposition may or may not be affected by bilateral exchange rate movements³, domestic demand adjustments and trade shocks in third countries impact each of them differently. A decrease in domestic demand leads to an adjustment of the portion of the trade balance capturing foreign value added absorbed by the two trade partners, whereas by definition it will have no effect on the part of the trade balance which is due to demand in third countries. Therefore, a completely balanced bilateral gross trade position is unlikely to be a good benchmark for assessing demand or price adjustments. Furthermore, this part of the trade balance may also occasionally be subject to volatility deriving from demand shocks in third countries that are independent of developments in the economies of the two trade partners.

Prior to the financial crisis there has been a substantial build-up in European trade imbalances. Particular attention has been paid to imbalances with other EU countries and especially with those countries with large current account deficits that were heavily affected by the financial crisis and the ensuing sovereign debt crisis (Berger and Nitsch, 2010; European Commission, 2010). We therefore apply our decomposition framework to the development of intra-EU27 trade balances from 1995 to 2011. We show that a major part of the difference, an average of 32% over the sample period, between intra-EU value added and gross bilateral balances is due to foreign value added consumed⁴ by the respective trading partner. However, a sizable share of intra-EU bilateral trade balances is due to demand in countries other than the two trading partners. The latter accounted for 25% of the total variance of intra-EU gross bilateral trade balances in 2011, which is a considerable rise from 3% in 1995. A structural decomposition analysis indicates that this evolution was especially due to the rising importance of production fragmentation in the European Union while the change in global demand was the second most important factor.

The rest of the paper is structured as follows. Section 2 describes our decomposition framework and defines the two approaches that assign value added flows to gross trade balances and discusses the relation of our decomposition framework to the previous literature. Section 3 presents our empirical results and Section 4 concludes.

²For example, consider the bilateral trade balance between Germany and France. To satisfy demand in China, Germany exports final goods directly to Chinese firms and costumers. In order to produce these goods Germany needs to import a part of the required intermediates from France thereby pushing Germany more towards a trade deficit with France. Similarly, France also imports some intermediates from Germany in order to produce goods which are meant for final consumption and investment in China, which pushes the German trade balance with France more towards a trade surplus. The magnitude and the sign of the net effect depend on the level and sectoral composition of external demand and the relative position in the value chain of the two countries.

³Depending on whether it is more appropriate to measure price competitiveness in terms of goods or in tasks (Bems and Johnson, 2012; Bayoumi et al., 2013).

⁴We use the terms *consumption* and *absorption in final demand* interchangeably. When using the term *consumption* we refer to all final demand categories specified in WIOD including final consumption expenditure by households, final consumption expenditure by non-profit organisations serving households, final consumption expenditure by the government, gross fixed capital formation and changes in inventories and valuables.

2 Methodology

In this section we first provide a short reminder of how bilateral gross and value added trade balances are calculated and, second, we present our decomposition framework, which can account for the differences between the two concepts. In the interest of space and readability, this section focuses on the case of three countries without loss of generality. The generalisation to the N -country case and technical details of the derivation are presented in the appendix.

2.1 Bilateral balances in gross and value added terms

A key finding of the literature on global value chains is that bilateral trade balances in gross terms differ from those in value added terms, while aggregate trade balances are the same in both cases. A global input-output table allows for the calculation of bilateral value added exports (Johnson and Noguera, 2012). Value added exports between country 1 and country 2 (VAX^{12}) are defined as the value added of country 1, which is ultimately absorbed in final demand by country 2. In the case of three countries, this is computed in the following way:

$$VAX^{12} = \begin{pmatrix} v^1 & 0 & 0 \end{pmatrix} \begin{pmatrix} l^{11} & l^{12} & l^{13} \\ l^{21} & l^{22} & l^{23} \\ l^{31} & l^{32} & l^{33} \end{pmatrix} \begin{pmatrix} f^{21} \\ f^{22} \\ f^{32} \end{pmatrix} = v^1 l^{11} f^{12} + v^1 l^{12} f^{22} + v^1 l^{13} f^{32} \quad (1)$$

where v^i is the value added coefficient of country i of the value added vector \mathbf{v} , l^{ij} refers to the i th row, j th column element⁵ of the Leontief inverse $L = (I - A)^{-1}$, A is the global input-output coefficient matrix and f^{ij} denotes final goods flows from country i to country j . Value added imports of country 1 from 2 are equal to the value added exports of country 2 to 1. Hence, the value added trade balance of country 1 with 2 ($NVAX^{12}$) is the difference between their respective bilateral value added exports:

$$\begin{aligned} NVAX^{12} &= VAX^{12} - VAX^{21} \\ &= \left(v^1 l^{11} f^{12} + v^1 l^{12} f^{22} + v^1 l^{13} f^{32} \right) - \left(v^2 l^{21} f^{11} + v^2 l^{22} f^{21} + v^2 l^{23} f^{31} \right) \end{aligned}$$

Similarly, the gross trade balance between country 1 and 2 (NX^{12}) can be expressed as the difference between their respective bilateral gross exports:

$$NX^{12} = e^{12} - e^{21} = f^{12} + z^{12} - f^{21} - z^{21} = f^{12} + a^{12} x^2 - f^{21} - a^{21} x^1 \quad (2)$$

where e^{ij} denotes gross exports from country i to j , z^{ij} is the flow of intermediates between i and j , which equals the share of intermediates of country i in production of country j (a^{ij} of the global input-output matrix A) multiplied by the level of gross output in country j (x^j).

⁵ l^{ij} is an $S \times S$ matrix if the number of sector S is greater than one.

2.2 Decomposition framework

To guide the reader through this section, we provide a brief outline of our decomposition framework and a summary of the main ideas. The purpose of the decomposition proposed here is to elucidate the differences between gross and value added trade balances. To identify meaningful categories in bilateral gross trade flows we use two simple criteria: (a) the origin of the value added embedded in gross trade flows and (b) the country, which ultimately absorbs the value added in its final demand.

Accordingly, in a first step all gross trade flows are broken down by the origin of their value added content and are expressed as a function of final demand in accordance with a demand driven Leontief model. Second, a crucial step is to identify the intersection between bilateral gross and value added exports. The key question that arises in this regard is to which bilateral gross trade flow value added exports should be assigned if the embedded value added crosses international borders multiple times. It turns out that the solution to this problem is a matter of definition and therefore to some extent arbitrary. We consider two extreme cases taking the perspective of (1) the country, in which the value added originates (source-based approach) and (2) the country, which ultimately absorbs the value added in final demand (sink-based approach). While infinitely many other allocations are possible in theory, the two cases considered are arguably the most parsimonious and they allow us to assess the sensitivity our results to this methodological choice. Our preferred solution is the source-based approach since it entails an intuitive definition of double counted value added based on the number of border crossings. In the source-based approach a value added export is assigned to the gross trade flow, in which it leaves the producing country for the very first time, whereas it is labeled as *double counted* in case it has crossed international borders (and hence has been counted as value added exports) previously. In accordance with the aforementioned definitions, bilateral gross trade balances are decomposed into six components explained in more detail below: a) the intersection with the respective value added trade balance, value added of the two trading partners that is b) double counted or c) reflected back via third countries for consumption in the country of origin, d) foreign value added consumed by the respective trading partner, e) domestic and f) foreign value added ultimately absorbed in final demand of third countries.

2.3 Bilateral exports and value added components

As outlined above, in a first step, gross exports are broken down by the origin of their value added content⁶

$$\begin{aligned} e^{12} &= f^{12} + a^{12}x^2 \\ &= v^1 l^{11} f^{12} + v^2 l^{21} f^{12} + v^3 l^{31} f^{12} + v^1 l^{11} a^{12} x^2 + v^2 l^{21} a^{12} x^2 + v^3 l^{31} a^{12} x^2 \end{aligned} \quad (3)$$

In a second step, gross exports are expressed as a function of final demand of the country that ultimately absorbs the value added. In order to do so, we express gross output of country 2, x^2 , as a function of final demand

$$x^2 = l^{21}(f^{11} + f^{12} + f^{13}) + l^{22}(f^{21} + f^{22} + f^{23}) + l^{23}(f^{31} + f^{32} + f^{33}) \quad (4)$$

⁶Since $\mathbf{v} = l'(I - A)$. For more details see, for example, Stehrer (2012).

and substitute x^2 in equation (3) by (4):

$$\begin{aligned}
e^{12} &= v^1 l^{11} f^{12} + v^2 l^{21} f^{12} + v^3 l^{31} f^{12} \\
&+ v^1 l^{11} a^{12} [l^{21}(f^{11} + f^{12} + f^{13}) + l^{22}(f^{21} + f^{22} + f^{23}) + l^{23}(f^{31} + f^{32} + f^{33})] \\
&+ v^2 l^{21} a^{12} [l^{21}(f^{11} + f^{12} + f^{13}) + l^{22}(f^{21} + f^{22} + f^{23}) + l^{23}(f^{31} + f^{32} + f^{33})] \\
&+ v^3 l^{31} a^{12} [l^{21}(f^{11} + f^{12} + f^{13}) + l^{22}(f^{21} + f^{22} + f^{23}) + l^{23}(f^{31} + f^{32} + f^{33})]
\end{aligned}$$

In order to identify meaningful categories in bilateral gross trade flows we use (a) the origin of the value added embedded in gross trade flows and (b) the country, which ultimately absorbs the value added in its final demand. Accordingly, we apply the label $v^r..f^s$ to the terms in e^{12} , where r indicates the country of origin of the value added and s denotes the country, in which the value added is eventually consumed, independent of the path the value added takes in between which can cross borders multiple times:

$$\begin{aligned}
e^{12} &= \underbrace{v^1 l^{11} a^{12} \sum_i^3 l^{2i} f^{i1}}_{v^1..f^1} + \underbrace{v^1 l^{11} f^{12}}_{v^1..f^2} + \underbrace{v^1 l^{11} a^{12} \sum_i^3 l^{2i} f^{i3}}_{v^1..f^3} \\
&+ \underbrace{v^2 l^{21} a^{12} \sum_i^3 l^{2i} f^{i1}}_{v^2..f^1} + \underbrace{v^2 l^{21} f^{12}}_{v^2..f^2} + \underbrace{v^2 l^{21} a^{12} \sum_i^3 l^{2i} f^{i3}}_{v^2..f^3} \\
&+ \underbrace{v^3 l^{31} a^{12} \sum_i^3 l^{2i} f^{i1}}_{v^3..f^1} + \underbrace{v^3 l^{31} f^{12}}_{v^3..f^2} + \underbrace{v^3 l^{31} a^{12} \sum_i^3 l^{2i} f^{i3}}_{v^3..f^3}
\end{aligned}$$

Before presenting our trade balance decomposition, we need to clarify the relation between domestic value added absorbed in final demand by country 2 ($v^1..f^2$) and value added exports from country 1 to 2 (VAX¹²). Phrasing the question differently, we need to determine how to distribute VAX¹² to bilateral gross trade flows between countries. To illustrate the problem, let's consider the first term, $v^1 l^{11} f^{12}$, in the expression for VAX¹² in equation (1). It is important to note that the coefficient l^{11} describes all possible ways that value added from country 1 can take to travel embedded in intermediate goods through international production networks back to country 1 (see Appendix A.1). A similar argument holds for the other two terms in Equation (1). This means that a certain proportion of VAX¹² can be traced to gross trade flows between any two countries leading to double counting in the process. At least in theory, it is conceivable to assign these portions of VAX¹² to the respective bilateral flows. In the following, we consider two extreme cases. First, we take the perspective of the country, in which the value added originates (source-based approach) and, second, we consider the country which ultimately absorbs the value added in final demand as a reference point (sink-based approach). While it is conceivable to attribute value added exports of country 1 to 2 to gross trade flows between third countries, this would be theoretically unappealing and the two cases considered in this text are arguably the most parsimonious.

In the source-based approach, we assign only that portion of $v^1..f^2$ to VAX¹² which leaves the country for the first time in final goods or in the form of intermediate goods for further processing abroad, which we denote by VAX^{*12}. The remainder of $v^1..f^2$ has by definition been re-imported by 1 after processing

abroad and hence has crossed international borders at least twice, which we denote by DBC for double counting. To implement this mathematically the entry of the Leontief inverse l^{11} is split into a portion that captures intra-country processing, $I + a^{11} + a^{11}a^{11} + a^{11}a^{11}a^{11} + \dots = (1 - a^{11})^{-1}$ (i.e. every possible way of going from country 1 to country 1 without leaving the country) captured by the domestic Leontief inverse, and the remainder $l^{11} - (1 - a^{11})^{-1}$, which has crossed international borders at least twice.

$$\begin{aligned}
v^1..f.^2 &= v^1 l^{11} f^{12} + v^1 l^{11} a^{12} \sum_i^3 l^{2i} f^{i2} \\
&= \underbrace{v^1 (1 - a^{11})^{-1} f^{12} + v^1 (1 - a^{11})^{-1} a^{12} \sum_i^3 l^{2i} f^{i2}}_{\text{VAX}^{*12}} \\
&\quad + \underbrace{v^1 (l^{11} - (1 - a^{11})^{-1}) f^{12} + v^1 (l^{11} - (1 - a^{11})^{-1}) a^{12} \sum_i^3 l^{2i} f^{i2}}_{\text{DBC}}
\end{aligned}$$

Similarly, we can consider gross exports between country 1 and 3, e^{13} , which also include a term $v^1..f.^2$ that can be split into VAX^{*12} and DBC. Note that in the source-based approach VAX^{*ij} terms appear only in bilateral gross exports of country i , i.e. the value added producing country. Therefore, in the source-based approach, summing VAX^{*ij} terms across all bilateral imports of country j , i.e. the value added absorbing country, in general does not yield value added imports from country i . In Appendix A.5 we prove that the sum of all VAX^{*12} terms in e^{12} and e^{13} equals the value added exports from country 1 to 2, VAX^{12} .

In the sink-based approach, instead of considering the producing country we take the absorbing country as a reference point. In this case, we assign value added exports to the gross trade flow, in which value added last enters the country of final demand. Hence, we allocate only that portion of $v^1..f.^2$ to VAX^{12} which never leaves country 2 again before being absorbed in final demand. The remainder of $v^1..f.^2$ will once again be flagged as having been double counted. Domestic value added in final goods exports between country 1 and 2 is directly consumed in country 2 so it is unambiguously assigned to VAX^{*12} . For intermediate goods the situation is slightly more complicated. The portion of country 1's value added which is directly used in the production of final goods immediately consumed in country 2 is allocated to VAX^{*12} . The remainder leaves country 2 again embedded in intermediates even though it eventually re-enters 2 again for final absorption. The part of country 1's value added that never leaves country 2 again before being consumed, can be expressed mathematically as $1 + a^{22} + a^{22}a^{22} + a^{22}a^{22}a^{22} + \dots = (1 - a^{22})^{-1}$ instead of using l^{22} .

$$\begin{aligned}
v^1..f.^2 &= v^1 l^{11} f^{12} + v^1 l^{11} a^{12} l^{22} f^{22} + v^1 l^{11} a^{12} \sum_{i \neq 2}^3 l^{2i} f^{i2} \\
&= \underbrace{v^1 l^{11} f^{12} + v^1 l^{11} a^{12} (1 - a^{22})^{-1} f^{22}}_{\text{VAX}^{*12}} \\
&\quad + \underbrace{v^1 l^{11} a^{12} (l^{22} - (1 - a^{22})^{-1}) f^{22} + v^1 l^{11} a^{12} \sum_{i \neq 2}^3 l^{2i} f^{i2}}_{\text{DBC}}
\end{aligned}$$

Similarly, we can consider the gross exports between country 3 and 2, e^{32} , which also include a term $v^1..f.^2$ that can be split into VAX^{*12} and DBC. Note that in contrast to the source-based approach VAX^{*ij} terms appear only in bilateral gross imports of country j , i.e. the value added absorbing country. Therefore, in the sink-based approach, summing VAX^{*ij} terms across all bilateral exports of country i , i.e. the value added producing country, in general does not yield value added exports of country i . Again, in Appendix A.5 we prove that the sum of the VAX^{*12} terms in e^{12} and e^{32} equals the value added imports of country 2 from 1, VAM^{21} , and hence the value added exports from country 1 to 2, VAX^{12} .

Arguments can be found against and in favour of either one of the source- and the sink-based approach. We lean slightly towards the source-based approach since it entails an intuitive definition of value added that is double counted based on the number of border crossings. In the interest of space, we focus on the source-based approach in the main text and present the sink-based decomposition and its results in the appendix.

2.4 Relation to alternative decomposition approaches

Several decompositions of gross trade flows have recently been suggested in the literature (Daudin et al., 2011; Johnson and Noguera, 2012; Koopman et al., 2014; Foster-McGregor and Stehrer, 2013). However, none of these investigates the relation between bilateral gross and value added trade balances. While Johnson and Noguera (2012) relate value added balances to gross trade balances in terms of differences in bilateral value added to export ratios, their analysis leaves unexplained why these ratios differ between countries in the first place. The decomposition that is most similar to our contribution is the work by Koopman et al. (2014) (henceforth KWW), who decompose gross exports - albeit at the aggregate level - into value added exports and terms that are double counted in international trade statistics. The implicit definition of value added exports in the decomposition by KWW is worth clarifying in the light of our bilateral decomposition framework introduced here. In KWW all value added trade flows are assigned to the exporting country and the remainder of the gross trade flows between countries is labeled as double counted. Hence, KWW in principle endorse the source-based approach. However, value-added exports are then further subdivided into (1) domestic value added in direct final goods exports ($v^s \sum_{r \neq s}^C l^{ss} f^{sr}$), (2) domestic value added in intermediates exports absorbed by direct importers ($v^s \sum_{r \neq s}^C l^{sr} f^{rr}$) and (3) domestic value added in intermediates re-exported to third countries in intermediate goods ($v^s \sum_{r \neq s}^C \sum_{t \neq s, r}^C l^{sr} f^{rt}$). Note that this subdivision is not based on how often value added crosses international borders, but on the distinction between final and intermediate goods, and a somewhat ambiguous partition of intermediate exports.

Our decomposition framework suggests two refinements to the subdivision of value added exports. First, the division into final and intermediate goods exports is to a certain degree arbitrary since the first term involves both intermediate and final goods flows. In (1) l^{ss} describes all possible ways that domestic value added can travel through international production networks back to country s (see discussion above and Appendix A.1). Hence, a certain share of the domestic value added in (1) is initially exported in intermediates before it is included in final goods exports of s and shipped off to country r for absorption in final demand. Second, not all intermediates in (2) are absorbed by their *direct* importer since the Leontief inverse l^{sr} describes all possible ways that value added can flow between country s and country r involving

third countries, which is not in general equivalent to a^{sr} , i.e. direct sourcing of intermediates by country r from country s . For a consistent decomposition with the source-based approach as defined above (i.e. based on the number of international border crossings) and the labels suggested by KWW, it would be appropriate to decompose value added exports as follows: (1) $v^s \sum_{r \neq s}^C (I - a^{ss})^{-1} f^{sr}$, (2) $v^s \sum_{r \neq s}^C (I - a^{ss})^{-1} a^{sr} (I - a^{rr})^{-1} f^{rr}$ and (3) $v^s \sum_{r \neq s}^C (l^{ss} - (I - a^{ss})^{-1}) f^{sr} + v^s \sum_{r \neq s}^C (l^{sr} - (I - a^{ss})^{-1} a^{sr} (I - a^{rr})^{-1}) f^{rr} + v^s \sum_{r \neq s}^C \sum_{t \neq s, r}^C l^{sr} f^{rt}$. Hence, (1) describes value added that leaves country s for the very first time in final goods exports, (2) captures domestic value added in intermediates that is absorbed immediately by direct importers without being re-exported for further processing and (3) collects all the domestic value added terms that cross international borders several times before being incorporated in domestic final goods or final goods of other countries and before being absorbed in final demand abroad. Note that value added in terms (1) and (2) crosses international borders only once before being absorbed in final demand, whereas value added in term (3) crosses international borders multiple times and leads to double counting in the process.

While the two decompositions differ conceptually from each other, how important the differences are quantitatively is an empirical question. Table 1 shows the subdivision of value added exports according to KWW and our alternative subdivision based on the first international border crossing denoted by KWW* for the top ten value added exporters in 2011 in billion USD. The KWW* subdivision assigns the share of (1) domestic value added in direct final goods exports and (2) domestic value added in intermediates exports absorbed by direct importers that crosses international borders more than once to the third category (3*). Therefore (1) and (2) in the KWW decomposition are always larger than (1*) and (2*) in the KWW* decomposition, and (3) is always smaller than (3*). For example, China exported domestic value added worth 744 billion USD in final goods exports, 8 billion USD of which were originally exported as intermediates by China. Since this part was re-imported by China after processing abroad, it crossed international borders several times and was hence added to the third category (3*). China exported 676 billion USD worth of domestic value added in intermediates which was included and consumed in final goods in the same country. Domestic value added worth 128 billion USD of this amount crossed international borders more than once and was added to the third category (3*). In general, for domestic value added in direct final goods exports the difference between the two decompositions (cf. (1) vs. (1*)) is quantitatively relatively minor since only a small portion of domestic value added is re-imported by the country of production. For domestic value added in intermediates exports absorbed by direct importers, however, the difference between the two decompositions (cf. (2) vs. (2*)) is quantitatively non-negligible. This is because domestic value added in intermediate goods often crosses international borders more than once before being absorbed in final demand. The revised decomposition KWW* takes multiple border crossings into account and therefore yields a considerably larger value of domestic value added in intermediates re-exported to third countries in intermediate goods. In general, whether to choose the KWW or the KWW* decomposition depends on the particular research or policy question under consideration. In our case, KWW* is preferable since it accurately identifies the part of the value added that leads to double counting in international trade flows.

<i>countries</i>	KWW			KWW*			VAX
	(1)	(2)	(3)	(1*)	(2*)	(3*)	
	DV in direct final goods exports	DV in intermediates exports absorbed by direct importers	DV in intermediates re-exported to third countries in intermediate goods	DV in direct final goods exports	DV in intermediates exports absorbed by direct importers	DV in intermediates re-exported to third countries in intermediate goods	
CHN	744	676	154	736	548	290	1,574
USA	463	852	140	458	694	303	1,455
DEU	451	539	122	442	415	255	1,112
JPN	258	379	93	257	301	172	730
GBR	169	303	67	168	223	148	539
FRA	201	227	55	200	176	107	483
RUS	39	331	80	39	229	182	451
ITA	195	185	49	194	141	93	429
CAN	109	264	34	108	223	75	406
KOR	119	197	46	119	155	88	362
world	4,414	7,400	1,510	4,370	5,839	3,116	13,325

Table 1: **Comparison between the KWW and KWW* decomposition.** Subdivision of value added exports (column 8) according to KWW (column 2-4) and our adjusted subdivision denoted by KWW* (column 4-7) for the top ten value added exporters in 2011 in billion USD. (Deviations between the totals of the two subdivisions are due to rounding.)

2.5 Decomposition of bilateral gross trade balances (source-based approach)

This brings us back to apply the source-based decomposition approach above to bilateral trade balances (see Appendix A.2 for the sink-based approach). Using the definition of a bilateral trade balance in gross

terms and inserting the respective expressions yields:

$$\begin{aligned}
NX^{12} &= e^{12} - e^{21} \\
&= \underbrace{v^1(I - a^{11})^{-1}f^{12} + v^1(I - a^{11})^{-1}a^{12} \sum_i^3 l^{2i} f^{i2}}_{\text{NVAX}^{*12} (e^{12})} - \underbrace{v^2(I - a^{22})^{-1}f^{21} - v^2(I - a^{22})^{-1}a^{21} \sum_i^3 l^{1i} f^{i1}}_{\text{NVAX}^{*12} (e^{21})} \\
&+ \underbrace{v^1(l^{11} - (I - a^{11})^{-1})f^{12} + v^1(l^{11} - (I - a^{11})^{-1})a^{12} \sum_i^3 l^{2i} f^{i2}}_{\text{DBC} (e^{12})} + \underbrace{v^2l^{21}a^{12} \sum_i^3 l^{2i} f^{i1}}_{\text{DBC} (e^{12})} \\
&- \underbrace{v^2(l^{22} - (I - a^{22})^{-1})f^{21} - v^2(l^{22} - (I - a^{22})^{-1})a^{21} \sum_i^3 l^{1i} f^{i1}}_{\text{DBC} (e^{21})} - \underbrace{v^1l^{12}a^{21} \sum_i^3 l^{1i} f^{i2}}_{\text{DBC} (e^{21})} \\
&+ \underbrace{v^2l^{21}f^{12} + v^1l^{11}a^{12} \sum_i^3 l^{2i} f^{i1} + v^2l^{21}a^{12} \sum_i^3 l^{2i} f^{i2}}_{\text{REFL} (e^{12})} - \underbrace{v^1l^{12}f^{21} - v^1l^{12}a^{21} \sum_i^3 l^{1i} f^{i1} - v^2l^{22}a^{21} \sum_i^3 l^{1i} f^{i2}}_{\text{REFL} (e^{21})} \\
&+ \underbrace{v^3l^{31}f^{12} + v^3l^{31}a^{12} \sum_i^3 l^{2i} (f^{i1} + f^{i2})}_{\text{FVA}^{tp} (e^{12})} - \underbrace{v^3l^{32}f^{21} - v^3l^{32}a^{21} \sum_i^3 l^{1i} (f^{i1} + f^{i2})}_{\text{FVA}^{tp} (e^{21})} \\
&+ \underbrace{v^1l^{11}a^{12} \sum_i^3 l^{2i} f^{i3} + v^2l^{21}a^{12} \sum_i^3 l^{2i} f^{i3}}_{\text{DVA}^{3rd} (e^{12})} - \underbrace{v^2l^{22}a^{21} \sum_i^3 l^{1i} f^{i3} - v^1l^{12}a^{21} \sum_i^3 l^{1i} f^{i3}}_{\text{DVA}^{3rd} (e^{21})} \\
&+ \underbrace{v^3l^{31}a^{12} \sum_i^3 l^{2i} f^{i3}}_{\text{FVA}^{3rd} (e^{12})} - \underbrace{v^3l^{32}a^{21} \sum_i^3 l^{1i} f^{i3}}_{\text{FVA}^{3rd} (e^{21})}
\end{aligned}$$

where individual terms come with a label indicating whether they belong to e^{12} or e^{21} and have been grouped into the following categories. NVAX^{*12} is the subset of NVAX^{12} that is part of the bilateral gross trade balance between country 1 and 2 as described above. DBC refers to the double counting terms identified previously and, in addition, value added of the respective trading partner that is double counted, i.e. $\sum_i \sum_j v^j \dots f^i (e^{ij})$, where $i \neq j \in \{1, 2\}$ and (e^{ij}) denotes the appropriate bilateral gross trade flow. REFL is value added of one of the two trade partners that is reflected back via third countries and eventually consumed in the country of production, i.e. $\sum_i v^i \dots f^i$, where $i \in \{1, 2\}$. FVA^{tp} is foreign value added consumed by one of the two trading partners, i.e. $\sum_k \sum_i v^k \dots f^i$, where $i \in \{1, 2\}$ and $k \in \{3\}$ in the three country case. DVA^{3rd} is value added of one of the two trading partners ultimately absorbed in a third country, i.e. $\sum_i \sum_k v^i \dots f^k$, where $i \in \{1, 2\}$ and $k \in \{3\}$ in the three country case. FVA^{3rd} is foreign value added ultimately absorbed in a third country, i.e. $\sum_k \sum_l v^k \dots f^l$, where $k \in \{3\}$ and $l \in \{3\}$ in the three country case. Please refer to the appendix A.3 for the generalisation of the source-based decomposition to the N -country case.

Note that in the results section we group DBC and REFL together as a residual term, and we combine DVA^{3rd} and FVA^{3rd} to capture any imbalance between the two direct trading partners that is due to demand in third countries. Since we are interested in the differences between gross and value added trade

balances, we also introduce the additional term CORR (for value added correction). CORR denotes value added produced by one of the two trade partners that is absorbed in final demand by the respective trade partner, which is part of the value added trade balance, but does not figure in the balance in gross terms:

$$\text{CORR} = \text{NVAX}^{*12} - \text{NVAX}^{12} \quad (5)$$

This term reflects value added that is part of other bilateral gross trade balances (of the exporting country in the source-based approach and of the importing country in the sink-based approach).

3 Decomposing bilateral trade balances

In the following sections we focus on the most important results using the source-based approach while the differences between the source- and the sink-based approach are presented in the appendix (see Appendix A.7). None of our main findings is sensitive to the particular decomposition approach employed.⁷ Results are based on the World Input Output Database (WIOD).⁸

3.1 Selected results for individual country pairs

	(1)	(2)	(3)	(4)	(5)	(6)	(7)
	gross trade balance	value added trade balance	value added in gross trade balance	value added correction: (3)-(2)	foreign value added (trade partner demand)	domestic and foreign value added (3rd country demand)	residual
<i>in million USD</i>							
NLD-DEU	43,969	14,374	11,131	-3,243	20,098	12,514	226
DEU-FRA	39,098	27,961	22,461	-5,500	9,946	5,599	1,092
NLD-BEL	23,990	4,230	3,917	-312	2523	17,498	52
GBR-IRL	22,504	3,472	3,927	455	-2,878	21,272	183
NLD-ITA	22,134	13,166	11,118	-2,048	6,864	4,000	152
<i>in % of gross trade balance</i>							
NLD-DEU	100	33	25	-7	46	28	1
DEU-FRA	100	72	57	-14	25	14	3
NLD-BEL	100	18	16	-1	11	73	0
GBR-IRL	100	15	17	2	-13	95	1
NLD-ITA	100	59	50	-9	31	18	1

Table 2: Decomposition of the five largest bilateral trade balances between EU27 countries in 2011. (Deviations from totals and 100 % are due to rounding.)

Table 2 shows the five largest gross bilateral trade balances between EU27 countries in 2011 and the components derived using the source-based decomposition framework outlined above. In general, the composition of gross trade balances is fairly heterogeneous across country pairs, although some first patterns become apparent. As documented previously, value added balances differ markedly from

⁷By definition the only difference that can arise are shifts between the contributions of the part of the value added balance that overlaps with the bilateral gross trade balance and double counting terms. In the appendix (see Appendix A.7) we show that for these two categories the quantitative differences between the two approaches are relatively minor.

⁸See www.wiod.org

balances in gross terms. For example, while the Netherlands reported a trade surplus of 44 billion USD with Germany, the value added balance between the two countries was 67% lower and stood at 14.4 billion USD. Our decomposition framework disentangles the two concepts and quantifies the factors that contribute to their differences. For most country pairs⁹ the value added contained in the gross bilateral balance (column 3) is smaller than the value added balance (column 2), while the remainder appears in the gross bilateral balances of other countries (column 4). Foreign value added consumed by the respective trading partner makes up a substantial share of the difference between gross and value added concepts for most of the trade balances considered. Another important factor that emerges is demand in countries other than the two trade partners, which, for example, makes up a sizable portion of 28% of the gross bilateral trade balance between the Netherlands and Germany. The residual, which is composed of trade that is double counted and domestic value added that is reflected back via third countries for domestic consumption, does not play a significant role in any of the five bilateral trade balances under consideration.

NLD-DEU				DEU-FRA			
<i>top 5 demand countries</i>	million USD	% of 3rd country demand	% of gross trade balance	<i>top 5 demand countries</i>	million USD	% of 3rd country demand	% of gross trade balance
ROW	4,352	35	10	ROW	3,842	69	10
USA	1,438	11	3	ESP	1,319	24	3
CHN	1,237	10	3	AUT	-665	-12	-2
FRA	913	7	2	ITA	640	11	2
AUT	896	7	2	BEL	579	10	1

Table 3: Third country demand decomposition of the NLD-DEU and DEU-FRA gross trade balance in 2011 by demand country.

Given the importance of demand in third countries in explaining the difference between value added and gross trade balances, Table 3 provides a further breakdown of which countries matter for the third country demand effect in the gross trade balance between the Netherlands and Germany as well as Germany and France. Demand in countries not further specified in WIOD explain about 10% of both gross trade balances. Both final demand in the United States and China are responsible for 3% of the trade surplus of the Netherlands vis-à-vis Germany while France and Austria each contribute another 2%. Germany's trade surplus with France is partially due to demand in Spain (3%), Italy (2%) and Belgium (1%), while demand in Austria actually leads to a small reduction (2%) of its surplus. Demand in other countries not listed in Table 3 account for the remainder of the third country effect.

A point that is worth highlighting is that bilateral value added balances do not necessarily have to be (i) smaller, but can also be (ii) larger in absolute terms than gross trade balances. Furthermore, the trade balance can also reverse its sign, which means that a country could go, for example, from (iii) a trade surplus in gross terms to a trade deficit in value added terms, and (iv) in some rarer cases this value added trade deficit could also be larger in absolute terms than its gross trade surplus. Which particular

⁹Note that the value added in the gross trade balance between the UK and Ireland is greater than the value added trade balance. While the value added in gross exports to a particular country is by definition equal to or smaller than the value added exports to that country, it is evident that the same does not hold for a bilateral trade balance, which is the difference between the bilateral exports of the two countries.

	(1)	(2)	(3)	(4)	(5)	(6)	(7)
	gross trade balance	value added trade balance	value added in gross trade balance	value added correction: (3)-(2)	foreign value added (trade partner demand)	domestic and foreign value added (3rd country demand)	residual
<i>in million USD</i>							
(i) NLD-DEU	43,969	14,374	11,131	-3,243	20,098	12,514	226
(ii) NLD-GBR	6,774	10,771	8,135	-2,636	10,026	-11,421	34
(iii) GBR-LUX	19,650	-83	58	141	-193	19,664	120
(iv) SWE-DNK	223	-774	-785	-11	836	168	4
<i>in % of gross trade balance</i>							
(i) NLD-DEU	100	33	25	-7	46	28	1
(ii) NLD-GBR	100	159	120	-39	148	-169	1
(iii) GBR-LUX	100	0	0	1	-1	100	1
(iv) SWE-DNK	100	-348	-352	-5	375	76	2

Table 4: Decomposition of greatest differences between gross and value added bilateral balances in 2011. (Deviations from totals and 100% are due to rounding.)

case applies to a given country pair depends on the sign and magnitude of the value added trade balance and the remaining components of the decomposition. Table 4 shows the decomposition of the greatest differences between gross and value added bilateral balances between EU27 countries in 2011 for the four different cases described above.¹⁰ (i) The value added balance between the Netherlands and Germany shows the largest reduction relative to the gross trade balance without changing its sign, and the factors that contribute to the difference were already discussed above. (ii) The value added trade surplus between the Netherlands and the UK is actually larger than the surplus measured in gross terms. This is due to considerable Dutch value added flows entering the UK via third countries (column 4) and because the UK provides more intermediates to the Netherlands destined for consumption in third countries (column 6), which is not offset by the large foreign value added surplus of the Netherlands with the UK (column 5). (iii) The UK has a large trade surplus with Luxembourg in gross terms, yet a small trade deficit in value added terms. This is mainly due to demand in countries other than the UK and Luxembourg (column 6), i.e. because the UK provides a large volume of domestic and foreign intermediates to Luxembourg that are eventually consumed in other countries. (iv) Finally, the Swedish value added balance with Denmark changes its sign and is larger in absolute terms than its gross trade balance. In this case, a combination of foreign value added (column 5) and demand in third countries (column 6) explains the difference.

3.2 Decomposition of intra-EU27 trade imbalances

Although these country-specific results highlight the importance of the various factors driving the differences between gross and value added trade balances, we aim at a broader view of these patterns across EU27 countries (the results for EMU17 countries are presented in Appendix A.6). In gross terms intra-EU27 trade imbalances increased substantially between 1995 and 2008 (Figure 1a) as measured by

¹⁰(i) value added balance *smaller* in absolute terms than and *same* sign as gross trade balance; (ii) value added balance *larger* in absolute terms than and *same* sign as gross trade balance; (iii) value added balance *smaller* in absolute terms than and *different* sign as gross trade balance; (iv) value added balance *larger* in absolute terms than and *different* sign as gross trade balance. Note that for (i) and (iii) the trade imbalance in gross terms is exacerbated, i.e. appears larger than it actually is, while for (ii) and (iv) it is attenuated, i.e. appears smaller than it actually is.

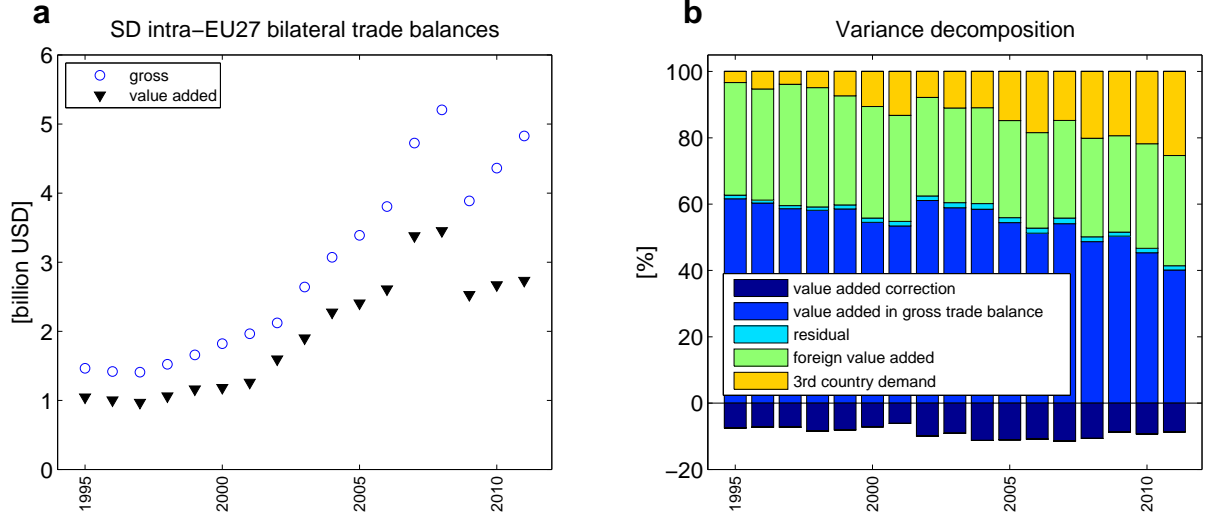


Figure 1: **Development of intra-EU27 bilateral trade balances and their components.** a) Standard deviation of intra-EU27 bilateral trade balances in gross and value added terms. b) Variance decomposition of intra-EU27 bilateral gross trade balances.

the standard deviation of the bilateral trade balances between all EU27 countries¹¹. The great trade collapse led to a substantial reduction in the imbalance measure in 2009, while bilateral imbalances have rebounded since and almost reached their pre-crisis level in 2011. A similar trend is observed when considering imbalances in value added terms. However, in the past decade there has been a growing divergence between the measure in gross and value added terms with the increase in the latter being much weaker. We apply a variance decomposition of intra-EU bilateral gross trade balances in order to assess the importance of individual components of the trade balance and to account for the divergent development of gross and value added balances over time.¹² Figure 1b shows that intra-EU gross trade balances have become less representative of value added trade balances over time. In 1995 the trade balance in value added terms (*value added in gross trade balance* + *value added correction*) accounted for 69% of the gross trade balance, while in 2011 its share was down to only 49%. This trend was in particular due to a rising importance of demand in third countries, which increased from 3% in 1995 to 25% in 2011. Foreign value added directly consumed by one of the two trading partners determined the major part of the difference between gross and value added concepts, although its importance has remained relatively constant accounting for an average of 32% of the variance in the period under consideration. Similarly, the part of the value added trade balance not included in the gross trade balance (*value added correction*) has not changed appreciably since 1995 and on average was equivalent to about 9% of the gross trade balance. The overall conclusions remain unchanged when considering the sample

¹¹A total of $27^2 - 27 = 702$ bilateral trade balances or 301 country pairs were considered, i.e. two trade balances - one deficit and one surplus - for each pair of countries.

¹²The overall variance of gross trade balances is decomposed into

$$\text{var}\left(\sum_i x_i\right) = \sum_i \text{var}(x_i) + \sum_i \sum_{j \neq i} \text{cov}(x_i, x_j)$$

where x_i refers to the i -th component that constitutes the trade balance. The contribution of component x_i is then computed as

$$\phi(x_i) = \frac{\text{var}(x_i) + \sum_{j \neq i} \text{cov}(x_i, x_j)}{\text{var}\left(\sum_i x_i\right)}$$

i.e. the contribution of the covariance term of x_i and x_j is equally split between components i and j .

of the euro-area countries, i.e. the EMU17, instead of EU27 countries (see Appendix A.6).

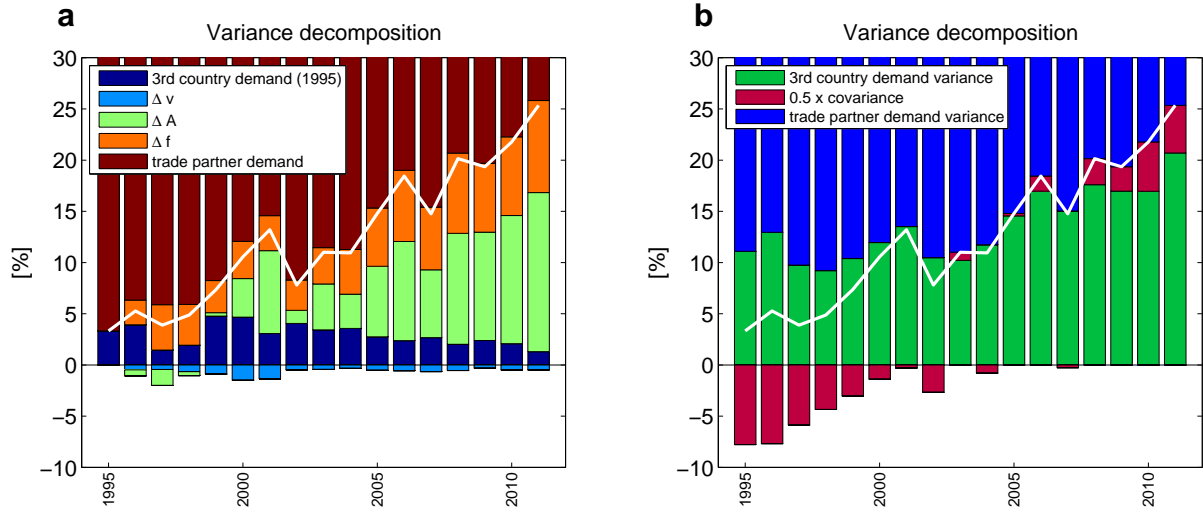


Figure 2: **Accounting for changes in the third country demand effect.** a) Structural decomposition analysis of intra-EU27 bilateral gross trade balances decomposing the shift in the third country demand effect relative to the reference year 1995 into changes of final demand (Δf), international production sharing (ΔA) and value added content (Δv). b) Variance decomposition of intra-EU27 bilateral gross trade balances into variance and covariance components of third country and trade partner demand. (White line - overall third country demand contribution.)

To shed light on the driving forces behind the increase in the third country demand effect over time two additional analyses are performed. First, we used a structural decomposition analysis (Dietzenbacher and Los, 1998; Miller and Blair, 2009)¹³ of the third country demand effect in order to gain further insights into what determined its change over time. The structural decomposition analysis provides a breakdown of the shift in the third country demand effect into changes of final demand (Δf), international production sharing (Δa and Δl) and value added content (Δv). Figure 2a indicates that relative to the reference year 1995 intensified international production sharing contributed roughly two thirds (+15.5pp) to the larger prominence of the third country demand effect, while changes in final demand were responsible for most of the remainder (+9pp).¹⁴ The sectoral value added content of exports - which, for example, is reduced when firms outsource production of intermediate inputs to other sectors - had a negligible impact (-0.5pp).

Second, we split the gross trade balance into trade partner and third country demand shares and

¹³Structural decomposition analysis provides an additive decomposition of a matrix product y of n -terms into contributions of its individual factors x_i

$$\begin{aligned} \Delta y &= \frac{1}{2}(\Delta x_1)[(x_2^0 \dots x_n^0) + (x_2^1 \dots x_n^1)] \\ &+ \frac{1}{2}[x_1^0(\Delta x_2)(x_3^0 \dots x_n^0) + x_1^1(\Delta x_2)(x_3^0 \dots x_n^0)] + \dots \\ &+ \frac{1}{2}[(x_1^0 \dots x_{n-2}^0)(\Delta x_{n-1})x_n^1 + (x_1^1 \dots x_{n-2}^1)(\Delta x_{n-1})x_n^0] \\ &+ \frac{1}{2}[(x_1^0 \dots x_{n-1}^0) + (x_1^1 \dots x_{n-1}^1)](\Delta x_n) \end{aligned}$$

where superscripts indicate data for different years ($t = 0, 1$).

¹⁴Note that the changing contribution of *3rd country demand in 1995* is due to two effects. First, while the variance of the third country demand effect in 1995 remained constant over time, the overall variance of intra-EU bilateral balances increased and hence one would expect the former's relative contribution to decline. Second, the covariance terms between *3rd country demand in 1995* and all the other components does change over time. This generates a second source of variation in *3rd country demand in 1995*, since half of the covariance terms are assigned to third country demand effect in 1995.

repeated the variance decomposition exercise from before considering both the variance and covariance terms that contribute to the overall magnitude of the third country demand effect. Figure 2b suggests that the rising importance of demand in third countries for intra-EU bilateral balances was due to both an increase in the magnitude - the variance - of the third country demand effect (from 11.1% in 1995 to 20.7% in 2011) and a stronger alignment - a positive covariance - between the third country demand effect and the remainder of the trade balance (from -7.7% in 1995 to 4.6% in 2011). The increase in the covariance term means that countries running a *classic* trade deficit (i.e. importing more from their trade partner than they are exporting to them) were also more likely to move relatively more downstream in international production chains (i.e. importing more intermediates from their trade partners than they were exporting to them in order to satisfy final demand in third countries).

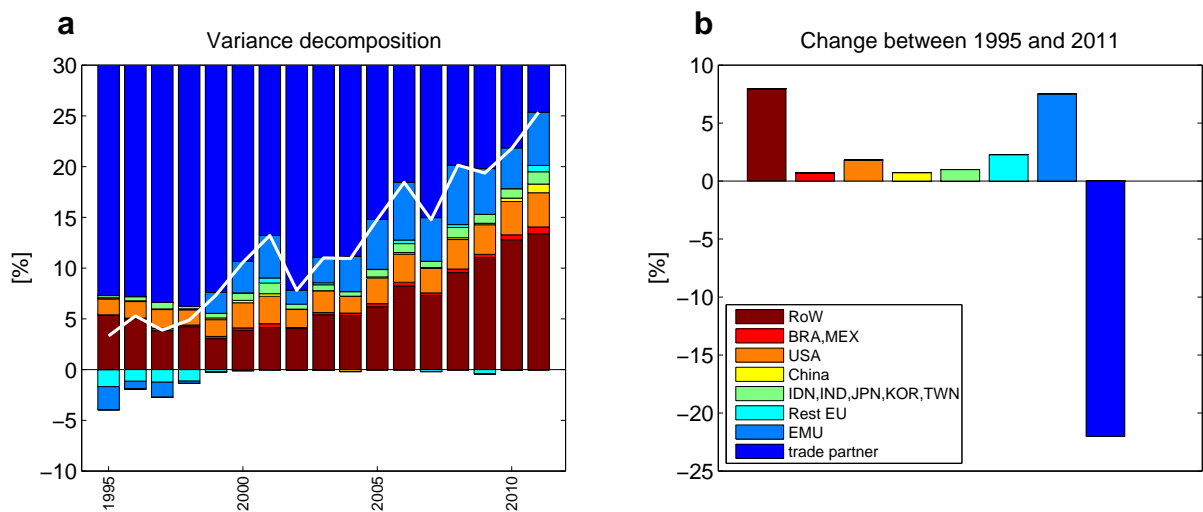


Figure 3: **Contributions of individual countries to intra-European imbalances.**

a) Variance decomposition of intra-EU27 gross trade balances between 1995 and 2011 by country of final demand. b) Difference of individual country and regional contributions between 2011 and 1995. (White line - overall third country demand contribution.)

To further characterise the third country demand effect we consider an additional variance decomposition which identifies the contributions of individual countries to intra-European imbalances. Figure 3a provides a breakdown of intra-EU27 bilateral trade balances by demand for both domestic and foreign value added in different countries and regions. EU27 and in particular EMU countries other than the trading partners were on average responsible for 5% of bilateral imbalances. The US with 3% was the single most important country in 2011, while China accounted for 1% of the variance. Demand in Indonesia, India, Japan, Korea and Taiwan together, as well as Brazil and Mexico combined contributed about 1% each. The remainder of 13% was due to demand in the rest of the world. The large dispersion of contributions across countries shows that - while the cumulative third country demand effect was a non-negligible 25% - any single country had only a relatively minor impact on the average bilateral trade balance in the EU. Figure 3b shows that particularly demand in other EU countries, the US and the rest of the world had a larger impact on intra-EU imbalances in 2011 than in 1995, whereas the significance of direct trade partners declined sharply. Demand in other countries only marginally increased in importance. It is worth highlighting that due to the changes that occurred in the past decade about one

fifth of intra-EU27 trade balances in 2011 was due to demand in non-EU countries. This suggests that intra-European trade imbalances were overstated while those with countries outside of European Union were slightly underestimated. Indeed, the value added trade balance vis-à-vis the European Union as a whole was smaller (and therefore the one with non-European countries larger) than the gross trade balance for 21 of the 27 countries. A similar result holds for the euro area for which the value added trade balance of individual countries with the EMU aggregate was smaller than the gross trade balance for 15 out of 17 countries. This finding makes it undesirable to assess intra-EU (intra-EMU) imbalances in terms of gross trade flows since a sizeable share of these are in fact trade imbalances with countries outside of the European Union (euro area) and they will by definition be unaffected by adjustment of domestic demand within the European Union (euro area).

4 Concluding remarks

The intensification of international production sharing has been a defining feature of the international economy in the recent decade. The availability of global input-output tables (Dietzenbacher et al., 2013) has sparked a growing literature on global value chains that has increasingly allowed to frame trade in value added terms (Foster-McGregor and Stehrer, 2013; Timmer et al., 2013; Johnson and Noguera, 2012). Reconciling the old with the new measures is an important step in understanding the significance of value added trade flows. This paper contributes to this literature by providing a novel decomposition of bilateral trade balances that accounts for the differences between gross and value added concepts. A major determinant of the difference that emerges along with foreign value added is demand in countries other than the two trading partners. Our results matter for policy as demand in third countries is by definition unaffected by domestic demand in the two trading partners, which is often one of the main targets for current account adjustments. Particularly in a currency union such as the euro area, it is important to establish with whom trade imbalances exist since the burden of adjustment may differ between trade deficits vis-à-vis member countries and third parties (di Mauro and Pappada, 2014). Even though their limitations are widely acknowledged gross bilateral trade balances still figure widely in the economic literature and policy debates (Davis and Weinstein, 2002; Bahmani-Oskooee and Brooks, 1999). Our paper provides a strong case for considering value added instead of gross bilateral trade balances since a sizable portion of gross bilateral trade balances is no longer under the influence of the direct trading partners themselves. Considering value added data is complicated by the fact that its release currently lags the publication of gross trade data by several years. Therefore, developing adequate tools and methods for forecasting value added trade flows based on current information is a promising area of future research.

References

- Bahmani-Oskooee, M., Brooks, T., 1999. Bilateral J-Curve between US and her Trading Partners. *Review of World Economics* 135, 156–165.
- Bayoumi, T., Saito, M., Turunen, J., 2013. Measuring Competitiveness: Trade in Goods or Tasks? IMF Working Papers 13/100. International Monetary Fund.
- Bems, R., Johnson, R.C., 2012. Value-Added Exchange Rates. Working Paper 18498. National Bureau of Economic Research.
- Berger, H., Nitsch, V., 2010. The Euro's Effect on Trade Imbalances. IMF Working Papers 10/226. International Monetary Fund.
- Daudin, G., Riffart, C., Schweisguth, D., 2011. Who Produces for Whom in the World Economy? *Canadian Journal of Economics* 44, 1403–1437. doi:10.1111/j.1540-5982.2011.01679.x.
- Davis, D.R., Weinstein, D.E., 2002. The Mystery of the Excess Trade (Balances). *American Economic Review* 92, 170–174.
- Dietzenbacher, E., Los, B., 1998. Structural Decomposition Techniques: Sense and Sensitivity. *Economic Systems Research* 10, 307–324.
- Dietzenbacher, E., Los, B., Stehrer, R., Timmer, M., de Vries, G., 2013. The Construction of World Input-Output Tables in the WIOD Project. *Economic Systems Research* 25, 71–98. doi:10.1080/09535314.2012.761180.
- European Commission, 2010. Surveillance of Intra-Euro-Area Competitiveness and Imbalances. *European Economy* 1. Directorate General Economic and Monetary Affairs (DG ECFIN), European Commission.
- Foster-McGregor, N., Stehrer, R., 2013. Value Added Content of Trade: A Comprehensive Approach. *Economics Letters* 120, 354 – 357. doi:http://dx.doi.org/10.1016/j.econlet.2013.05.003.
- Johnson, R.C., Noguera, G., 2012. Accounting for Intermediates: Production Sharing and Trade in Value Added. *Journal of International Economics* 86, 224 – 236. doi:http://dx.doi.org/10.1016/j.jinteco.2011.10.003.
- Koopman, R., Wang, Z., Wei, S.J., 2014. Tracing Value-Added and Double Counting in Gross Exports. *American Economic Review* 104, 459–94. doi:10.1257/aer.104.2.459.
- di Mauro, F., Pappada, F., 2014. Euro Area External Imbalances and the Burden of Adjustment. *Journal of International Money and Finance* .
- Miller, R., Blair, P., 2009. *Input-Output Analysis: Foundations and Extensions*. Cambridge University Press.
- OECD (Ed.), 2013. *Interconnected Economies: Benefiting from Global Value Chains*. OECD Publishing. doi:10.1787/9789264189560-en.

Stehrer, R., 2012. Trade in Value Added and the Valued Added in Trade. wiiw Working Papers 81. The Vienna Institute for International Economic Studies, wiiw.

Stone, R., 1985. The Disaggregation of the Household Sector in the National Accounts, in: Pyatt, G., Round, J.I. (Eds.), *Social Accounting Matrices. A Basis for Planning*. The World Bank, Washington, DC, pp. 145–185.

Timmer, M.P., Los, B., Stehrer, R., de Vries, G.J., 2013. Fragmentation, Incomes and Jobs: An Analysis of European Competitiveness. *Economic Policy* 28, 613–661. doi:10.1111/1468-0327.12018.

A Appendix

A.1 Leontief inverse

In the main text it was argued that a coefficient of the Leontief inverse describes all possible ways that value added from a country r travels embedded in intermediate goods through international production networks to country s . In this section, we illustrate this statement mathematically. Denote the global input-output matrix by \mathbf{A} and the matrix with the domestic coefficients by $\tilde{\mathbf{A}}$. For the three-country case:

$$\mathbf{A} = \begin{pmatrix} a^{11} & a^{12} & a^{13} \\ a^{21} & a^{22} & a^{23} \\ a^{31} & a^{32} & a^{33} \end{pmatrix} \quad \tilde{\mathbf{A}} = \begin{pmatrix} a^{11} & 0 & 0 \\ 0 & a^{22} & 0 \\ 0 & 0 & a^{33} \end{pmatrix}$$

The Leontief inverses of these two matrices can be written as a geometric series, i.e.

$$\mathbf{L} = \mathbf{I} + \mathbf{A} + \mathbf{A}^2 + \mathbf{A}^3 + \dots = (\mathbf{I} - \mathbf{A})^{-1}$$

and

$$\tilde{\mathbf{L}} = \mathbf{I} + \tilde{\mathbf{A}} + \tilde{\mathbf{A}}^2 + \tilde{\mathbf{A}}^3 + \dots = (\mathbf{I} - \tilde{\mathbf{A}})^{-1}$$

where

$$\mathbf{A}^2 = \begin{pmatrix} a^{11} & a^{12} & a^{13} \\ a^{21} & a^{22} & a^{23} \\ a^{31} & a^{32} & a^{33} \end{pmatrix} \begin{pmatrix} a^{11} & a^{12} & a^{13} \\ a^{21} & a^{22} & a^{23} \\ a^{31} & a^{32} & a^{33} \end{pmatrix} = \begin{pmatrix} \sum_i a^{1i} a^{i1} & \sum_i a^{1i} a^{i2} & \sum_i a^{1i} a^{i3} \\ \sum_i a^{2i} a^{i1} & \sum_i a^{2i} a^{i2} & \sum_i a^{2i} a^{i3} \\ \sum_i a^{3i} a^{i1} & \sum_i a^{3i} a^{i2} & \sum_i a^{3i} a^{i3} \end{pmatrix}$$

and

$$\begin{aligned} \mathbf{A}^3 &= \begin{pmatrix} \sum_i a^{1i} a^{i1} & \sum_i a^{1i} a^{i2} & \sum_i a^{1i} a^{i3} \\ \sum_i a^{2i} a^{i1} & \sum_i a^{2i} a^{i2} & \sum_i a^{2i} a^{i3} \\ \sum_i a^{3i} a^{i1} & \sum_i a^{3i} a^{i2} & \sum_i a^{3i} a^{i3} \end{pmatrix} \begin{pmatrix} a^{11} & a^{12} & a^{13} \\ a^{21} & a^{22} & a^{23} \\ a^{31} & a^{32} & a^{33} \end{pmatrix} \\ &= \begin{pmatrix} \sum_j (\sum_i a^{1i} a^{ij}) a^{j1} & \sum_j (\sum_i a^{1i} a^{ij}) a^{j2} & \sum_j (\sum_i a^{1i} a^{ij}) a^{j3} \\ \sum_j (\sum_i a^{2i} a^{ij}) a^{j1} & \sum_j (\sum_i a^{2i} a^{ij}) a^{j2} & \sum_j (\sum_i a^{2i} a^{ij}) a^{j3} \\ \sum_j (\sum_i a^{3i} a^{ij}) a^{j1} & \sum_j (\sum_i a^{3i} a^{ij}) a^{j2} & \sum_j (\sum_i a^{3i} a^{ij}) a^{j3} \end{pmatrix} \end{aligned}$$

A typical element of the matrix \mathbf{A}^3 is

$$a^{(3)kl} = \sum_{i_3} \left(\sum_{i_2} a^{ki_2} a^{i_2 i_3} \right) a^{i_3 l}$$

More generally for the matrix \mathbf{A}^n a typical element is

$$a^{(n)kl} = \sum_{i_n} \left(\sum_{i_{n-1}} \dots \sum_{i_3} \left(\sum_{i_2} a^{ki_2} a^{i_2 i_3} \right) a^{i_3 i_4} \dots a^{i_{n-1} i_n} \right) a^{i_n l}$$

Therefore, a typical element of the Leontief inverse can be written using the expressions derived from the geometric series above

$$l^{(n)kl} = \delta^{kl} + a^{kl} + \sum_{m=2}^n a^{(m)kl}$$

with $\delta^{kl} = 1$ for $k = l$ and $\delta^{kl} = 0$ for $k \neq l$ (Kronecker delta). Thus, the entries of the Leontief inverse describe *all* possible ways to go from country k to country l . Note that naturally this also holds true for the diagonal elements in the matrix with the domestic coefficients $\tilde{\mathbf{A}}$. For calculating the part of the value added which does not leave a country at all one therefore has to take account only of the diagonal elements of the $\tilde{\mathbf{A}}$ matrix

$$\tilde{l}^{kk} = \sum_{m=0}^{\infty} (a^{kk})^m = (1 - a^{kk})^{-1}$$

Thus in matrix notation

$$\tilde{\mathbf{L}} = (\mathbf{I} - \tilde{\mathbf{A}})^{-1}$$

In the text the Leontief is therefore split into

$$\mathbf{L} = \tilde{\mathbf{L}} + (\mathbf{L} - \tilde{\mathbf{L}})$$

or

$$\mathbf{L} = \begin{pmatrix} l^{11} & l^{12} & l^{13} \\ l^{21} & l^{22} & l^{23} \\ l^{31} & l^{32} & l^{33} \end{pmatrix} = \begin{pmatrix} \tilde{l}^{11} & 0 & 0 \\ 0 & \tilde{l}^{22} & 0 \\ 0 & 0 & \tilde{l}^{33} \end{pmatrix} + \begin{pmatrix} l^{11} - \tilde{l}^{11} & l^{12} & l^{13} \\ l^{21} & l^{22} - \tilde{l}^{22} & l^{23} \\ l^{31} & l^{32} & l^{33} - \tilde{l}^{33} \end{pmatrix}$$

It is important to note that $(l^{kk} - \tilde{l}^{kk}) \geq 0$ (or a non-negative matrix in the multi-sectoral case) which holds by definition (see also Stone (1985)).

A.2 Decomposition of bilateral gross trade balances (sink-based approach)

As mentioned in the text, the corresponding decomposition for the sink-based approach is given by

$$\begin{aligned}
NX^{12} &= e^{12} - e^{21} \\
&= \underbrace{v^1 l^{11} f^{12} + v^1 l^{11} a^{12} (1 - a^{22})^{-1} f^{22}}_{\text{NVAX}^{*12} (e^{12})} - \underbrace{v^2 l^{22} f^{21} - v^2 l^{22} a^{21} (1 - a^{11})^{-1} f^{11}}_{\text{NVAX}^{*12} (e^{21})} \\
&\quad + \underbrace{v^1 l^{11} a^{12} (l^{22} - (1 - a^{22})^{-1}) f^{22}}_{\text{DBC} (e^{12})} + \underbrace{v^1 l^{11} a^{12} \sum_{i \neq 2}^3 l^{2i} f^{i2}}_{\text{DBC} (e^{12})} + \underbrace{v^2 l^{21} a^{12} \sum_i^3 l^{2i} f^{i1}}_{\text{DBC} (e^{12})} \\
&\quad - \underbrace{v^2 l^{22} a^{21} (l^{11} - (1 - a^{11})^{-1}) f^{11}}_{\text{DBC} (e^{21})} + \underbrace{v^2 l^{22} a^{21} \sum_{i \neq 1}^3 l^{1i} f^{i1}}_{\text{DBC} (e^{21})} - \underbrace{v^1 l^{12} a^{21} \sum_i^3 l^{1i} f^{i2}}_{\text{DBC} (e^{21})} \\
&\quad + \underbrace{v^2 l^{21} f^{12} + v^1 l^{11} a^{12} \sum_i^3 l^{2i} f^{i1} + v^2 l^{21} a^{12} \sum_i^3 l^{2i} f^{i2}}_{\text{REFL} (e^{12})} - \underbrace{v^1 l^{12} f^{21} - v^1 l^{12} a^{21} \sum_i^3 l^{1i} f^{i1} - v^2 l^{22} a^{21} \sum_i^3 l^{1i} f^{i2}}_{\text{REFL} (e^{21})} \\
&\quad + \underbrace{v^3 l^{31} f^{12} + v^3 l^{31} a^{12} \sum_i^3 l^{2i} (f^{i1} + f^{i2})}_{\text{FVA}^{tp} (e^{12})} - \underbrace{v^3 l^{32} f^{21} - v^3 l^{32} a^{21} \sum_i^3 l^{1i} (f^{i1} + f^{i2})}_{\text{FVA}^{tp} (e^{21})} \\
&\quad + \underbrace{v^1 l^{11} a^{12} \sum_i^3 l^{2i} f^{i3} + v^2 l^{21} a^{12} \sum_i^3 l^{2i} f^{i3}}_{\text{DVA}^{3rd} (e^{12})} - \underbrace{v^2 l^{22} a^{21} \sum_i^3 l^{1i} f^{i3} - v^1 l^{12} a^{21} \sum_i^3 l^{1i} f^{i3}}_{\text{DVA}^{3rd} (e^{21})} \\
&\quad + \underbrace{v^3 l^{31} a^{12} \sum_i^3 l^{2i} f^{i3}}_{\text{FVA}^{3rd} (e^{12})} - \underbrace{v^3 l^{32} a^{21} \sum_i^3 l^{1i} f^{i3}}_{\text{FVA}^{3rd} (e^{21})}
\end{aligned}$$

where individual terms were labeled as in the source-based approach. Note that NVAX^{*12} and DBC are the only terms that are different from those in the source-based approach.

A.3 Generalisation to N -country case

The generalisation of the source- and sink-based approach to the N -country case is achieved by summing the corresponding terms over all trade partners.

A.3.1 Source-based approach

$$\begin{aligned}
NX^{ij} &= e^{ij} - e^{ji} \\
&= \underbrace{v^i(I - a^{ii})^{-1}f^{ij} + v^i(I - a^{ii})^{-1}a^{ij} \sum_k^N l^{jk} f^{kj}}_{\text{NVAX}^{*ij} (e^{ij})} - \underbrace{v^j(I - a^{jj})^{-1}f^{ji} - v^j(I - a^{jj})^{-1}a^{ji} \sum_k^N l^{ik} f^{ki}}_{\text{NVAX}^{*ij} (e^{ji})} \\
&+ \underbrace{v^i(l^{ii} - (I - a^{ii})^{-1})f^{ij} + v^i(l^{ii} - (I - a^{ii})^{-1})a^{ij} \sum_k^N l^{jk} f^{kj}}_{\text{DBC} (e^{ij})} + \underbrace{v^j l^{ji} a^{ij} \sum_k^N l^{jk} f^{ki}}_{\text{DBC} (e^{ij})} \\
&- \underbrace{v^j(l^{jj} - (I - a^{jj})^{-1})f^{ji} - v^j(l^{jj} - (I - a^{jj})^{-1})a^{ji} \sum_k^N l^{ik} f^{ki}}_{\text{DBC} (e^{ji})} - \underbrace{v^i l^{ij} a^{ji} \sum_k^N l^{ik} f^{kj}}_{\text{DBC} (e^{ji})} \\
&+ \underbrace{v^j l^{ji} f^{ij} + v^i l^{ii} a^{ij} \sum_k^N l^{jk} f^{ki} + v^j l^{ji} a^{ij} \sum_k^N l^{jk} f^{kj}}_{\text{REFL} (e^{ij})} - \underbrace{v^i l^{ij} f^{ji} - v^i l^{ij} a^{ji} \sum_k^N l^{ik} f^{ki} - v^j l^{jj} a^{ji} \sum_k^N l^{ik} f^{kj}}_{\text{REFL} (e^{ji})} \\
&+ \underbrace{\sum_{k \neq i, j}^N [v^k l^{ki} f^{ij} + v^k l^{ki} a^{ij} \sum_m^N l^{jm} (f^{mi} + f^{mj})]}_{\text{FVA}^{tp} (e^{ij})} - \underbrace{\sum_{k \neq i, j}^N [v^k l^{kj} f^{ji} - v^k l^{kj} a^{ji} \sum_m^N l^{im} (f^{mi} + f^{mj})]}_{\text{FVA}^{tp} (e^{ji})} \\
&+ \underbrace{[v^i l^{ii} a^{ij} + v^j l^{ji} a^{ij}] \sum_k^N l^{jk} \sum_{m \neq i, j}^N f^{km}}_{\text{DVA}^{3rd} (e^{ij})} - \underbrace{[v^j l^{jj} a^{ji} - v^i l^{ij} a^{ji}] \sum_k^N l^{ik} \sum_{m \neq i, j}^N f^{km}}_{\text{DVA}^{3rd} (e^{ji})} \\
&+ \underbrace{\sum_{k \neq i, j}^N v^k l^{ki} a^{ij} \sum_m^N l^{jm} \sum_{n \neq i, j}^N f^{mn}}_{\text{FVA}^{3rd} (e^{ij})} - \underbrace{\sum_{k \neq i, j}^N v^k l^{kj} a^{ji} \sum_m^N l^{im} \sum_{n \neq i, j}^N f^{mn}}_{\text{FVA}^{3rd} (e^{ji})}
\end{aligned}$$

A.3.2 Sink-based approach

$$\begin{aligned}
NX^{ij} &= e^{ij} - e^{ji} \\
&= \underbrace{v^i l^{ii} f^{ij} + v^i l^{ii} a^{ij} (1 - a^{jj})^{-1} f^{jj}}_{\text{NVAX}^{*ij} (e^{ij})} - \underbrace{v^j l^{jj} f^{ji} - v^j l^{jj} a^{ji} (1 - a^{ii})^{-1} f^{ii}}_{\text{NVAX}^{*ij} (e^{ji})} \\
&+ \underbrace{v^i l^{ii} a^{ij} (l^{jj} - (1 - a^{jj})^{-1}) f^{jj}}_{\text{DBC} (e^{ij})} + \underbrace{v^i l^{ii} a^{ij} \sum_{k \neq j}^N l^{jk} f^{kj}}_{\text{DBC} (e^{ij})} + \underbrace{v^j l^{ji} a^{ij} \sum_k^N l^{jk} f^{ki}}_{\text{DBC} (e^{ij})} \\
&- \underbrace{v^j l^{jj} a^{ji} (l^{ii} - (1 - a^{ii})^{-1}) f^{ii}}_{\text{DBC} (e^{ji})} - \underbrace{v^j l^{jj} a^{ji} \sum_{k \neq i}^N l^{ik} f^{ki}}_{\text{DBC} (e^{ji})} - \underbrace{v^i l^{ij} a^{ji} \sum_k^N l^{ik} f^{kj}}_{\text{DBC} (e^{ji})} \\
&+ \underbrace{v^j l^{ji} f^{ij} + v^i l^{ii} a^{ij} \sum_k^N l^{jk} f^{ki} + v^j l^{ji} a^{ij} \sum_k^N l^{jk} f^{kj}}_{\text{REFL} (e^{ij})} - \underbrace{v^i l^{ij} f^{ji} - v^i l^{ij} a^{ji} \sum_k^N l^{ik} f^{ki} - v^j l^{jj} a^{ji} \sum_k^N l^{ik} f^{jk}}_{\text{REFL} (e^{ji})} \\
&+ \underbrace{\sum_{k \neq i, j}^N [v^k l^{ki} f^{ij} + v^k l^{ki} a^{ij} \sum_m^N l^{jm} (f^{mi} + f^{mj})]}_{\text{FVA}^{tp} (e^{ij})} - \underbrace{\sum_{k \neq i, j}^N [v^k l^{kj} f^{ji} - v^k l^{kj} a^{ji} \sum_m^N l^{im} (f^{mi} + f^{mj})]}_{\text{FVA}^{tp} (e^{ji})} \\
&+ \underbrace{[v^i l^{ii} a^{ij} + v^j l^{ji} a^{ij}] \sum_k^N l^{jk} \sum_{m \neq i, j}^N f^{km}}_{\text{DVA}^{3rd} (e^{ij})} - \underbrace{[v^j l^{jj} a^{ji} - v^i l^{ij} a^{ji}] \sum_k^N l^{ik} \sum_{m \neq i, j}^N f^{km}}_{\text{DVA}^{3rd} (e^{ji})} \\
&+ \underbrace{\sum_{k \neq i, j}^N v^k l^{ki} a^{ij} \sum_m^N l^{jm} \sum_{n \neq i, j}^N f^{mn}}_{\text{FVA}^{3rd} (e^{ij})} - \underbrace{\sum_{k \neq i, j}^N v^k l^{kj} a^{ji} \sum_m^N l^{im} \sum_{n \neq i, j}^N f^{mn}}_{\text{FVA}^{3rd} (e^{ji})}
\end{aligned}$$

A.4 Matrix inverse

If A is an n -by- n invertible matrix, there exists an n -by- n matrix B such that

$$AB = BA = I_n \quad (6)$$

and the matrix B is called the matrix inverse of A , denoted by A^{-1} . This equation is sometimes referred to as the “property of inverse matrices”. From the definition of the matrix inverse, several identities can be derived that will be useful for the proofs in the next section. Note that, technically speaking, the source- and sink based approach differ with respect to the corresponding identities which are applied.

A.4.1 Useful identities (source-based approach)

$$(I - A)(I - A)^{-1} = (I - A)L = I = \begin{bmatrix} I - a^{11} & -a^{12} & -a^{13} \\ -a^{21} & I - a^{22} & -a^{23} \\ -a^{31} & -a^{32} & I - a^{33} \end{bmatrix} \begin{bmatrix} l^{11} & l^{12} & l^{13} \\ l^{21} & l^{22} & l^{23} \\ l^{31} & l^{32} & l^{33} \end{bmatrix} = \begin{bmatrix} 1 & 0 & 0 \\ 0 & 1 & 0 \\ 0 & 0 & 1 \end{bmatrix} \quad (7)$$

For the source-based approach three of the resulting nine identities will be relevant:

$$(1 - a^{11})l^{11} - a^{12}l^{21} - a^{13}l^{31} = 1$$

$$(1 - a^{11})l^{12} - a^{12}l^{22} - a^{13}l^{32} = 0$$

$$(1 - a^{11})l^{13} - a^{12}l^{23} - a^{13}l^{33} = 0$$

or solving for the entry of the Leontief inverse related to output of country 1:

$$l^{11} = (1 - a^{11})^{-1}(1 + a^{12}l^{21} + a^{13}l^{31}) \quad (8)$$

$$l^{12} = (1 - a^{11})^{-1}(a^{12}l^{22} + a^{13}l^{32}) \quad (9)$$

$$l^{13} = (1 - a^{11})^{-1}(a^{12}l^{23} + a^{13}l^{33}) \quad (10)$$

A.4.2 Useful identities (sink-based approach)

$$(I - A)^{-1}(I - A) = L(I - A) = I = \begin{bmatrix} l^{11} & l^{12} & l^{13} \\ l^{21} & l^{22} & l^{23} \\ l^{31} & l^{32} & l^{33} \end{bmatrix} \begin{bmatrix} I - a^{11} & -a^{12} & -a^{13} \\ -a^{21} & I - a^{22} & -a^{23} \\ -a^{31} & -a^{32} & I - a^{33} \end{bmatrix} = \begin{bmatrix} 1 & 0 & 0 \\ 0 & 1 & 0 \\ 0 & 0 & 1 \end{bmatrix}$$

For the sink-based approach one of the resulting nine identities will be relevant:

$$-l^{11}a^{12} + l^{12}(I - a^{22}) - l^{13}a^{32} = 0$$

or solving for l^{12} :

$$l^{12} = (l^{11}a^{12} + l^{13}a^{32})(1 - a^{22})^{-1} \quad (11)$$

A.5 Proofs

A.5.1 Source-based approach

In this section, we show that the sum of all VAX^{*12} terms in e^{12} and e^{13} equals the value added exports from country 1 to 2, VAX^{12} . As discussed in main text, in order to arrive at the VAX^{*12} terms we substitute $(1 - a^{11})^{-1}$ for l^{11} in the expression for $v^1..f^{.2}$ in the bilateral gross exports to country 2

$$VAX^{*12}(e^{12}) = v^1(1 - a^{11})^{-1}f^{12} + v^1(1 - a^{11})^{-1}a^{12} \sum_i^3 l^{2i} f^{i2}$$

and country 3

$$VAX^{*12}(e^{13}) = v^1(1 - a^{11})^{-1}a^{13} \sum_i^3 l^{3i} f^{i2}$$

In the following, we need to show that

$$VAX^{12} = VAX^{*12}(e^{12}) + VAX^{*12}(e^{13})$$

In order to do so, l^{11} , l^{12} and l^{13} is substituted by (8)-(10) in the expression for VAX^{12} :

$$\begin{aligned} VAX^{12} &= v^1 l^{11} f^{12} + v^1 l^{12} f^{22} + v^1 l^{13} f^{32} \\ &= v^1(1 - a^{11})^{-1}(1 + a^{12}l^{21} + a^{13}l^{31})f^{12} \\ &\quad + v^1(1 - a^{11})^{-1}(a^{12}l^{22} + a^{13}l^{32})f^{22} \\ &\quad + v^1(1 - a^{11})^{-1}(a^{12}l^{23} + a^{13}l^{33})f^{32} \\ &= v^1(1 - a^{11})^{-1}f^{12} + v^1(1 - a^{11})^{-1}a^{12} \sum_i^3 l^{2i} f^{i2} \\ &\quad + v^1(1 - a^{11})^{-1}a^{13} \sum_i^3 l^{3i} f^{i2} \\ &= VAX^{*12}(e^{12}) + VAX^{*12}(e^{13}) \end{aligned}$$

A.5.2 Sink-based approach

Here, we show that the sum of all VAX^{*12} terms in e^{12} and e^{32} equals the value added exports from country 1 to 2, VAX^{12} and hence the value added imports of country 2 from 1, VAM^{21} . As discussed in the description of the sink-based approach, to arrive at the VAX^{*12} terms we substitute $(1 - a^{22})^{-1}$ for l^{22} in the expression for $v^1..f^{.2}$ in the bilateral gross imports of country 2 from country 1

$$VAX^{*12}(e^{12}) = v^1 l^{11} f^{12} + v^1 l^{11} a^{12} (1 - a^{22})^{-1} f^{22}$$

and from country 3

$$VAX^{*12}(e^{32}) = v^1 l^{13} a^{32} (1 - a^{22})^{-1} f^{22} + v^1 l^{13} f^{32}$$

In the following, we need to show that

$$VAX^{12} = VAX *^{12} (e^{12}) + VAX *^{12} (e^{32})$$

In order to do so, in the expression for VAX^{12} l^{12} is substituted by (11):

$$\begin{aligned} VAX^{12} &= v^1 l^{11} f^{12} + v^1 l^{12} f^{22} + v^1 l^{13} f^{32} \\ &= v^1 l^{11} f^{12} \\ &\quad + v^1 (l^{11} a^{12} + l^{13} a^{32}) (1 - a^{22})^{-1} f^{22} \\ &\quad + v^1 l^{13} f^{32} \\ &= v^1 l^{11} f^{12} + v^1 l^{11} a^{12} (1 - a^{22})^{-1} f^{22} \\ &\quad + v^1 l^{13} a^{32} (1 - a^{22})^{-1} f^{22} + v^1 l^{13} f^{32} \\ &= VAX *^{12} (e^{12}) + VAX *^{12} (e^{32}) \end{aligned}$$

A.6 Euro area results

All decomposition analyses presented in the main text were also performed for the sample of EMU17 countries. The results are qualitatively very similar for the euro area subset of EU27 countries and the main conclusions remain unchanged.

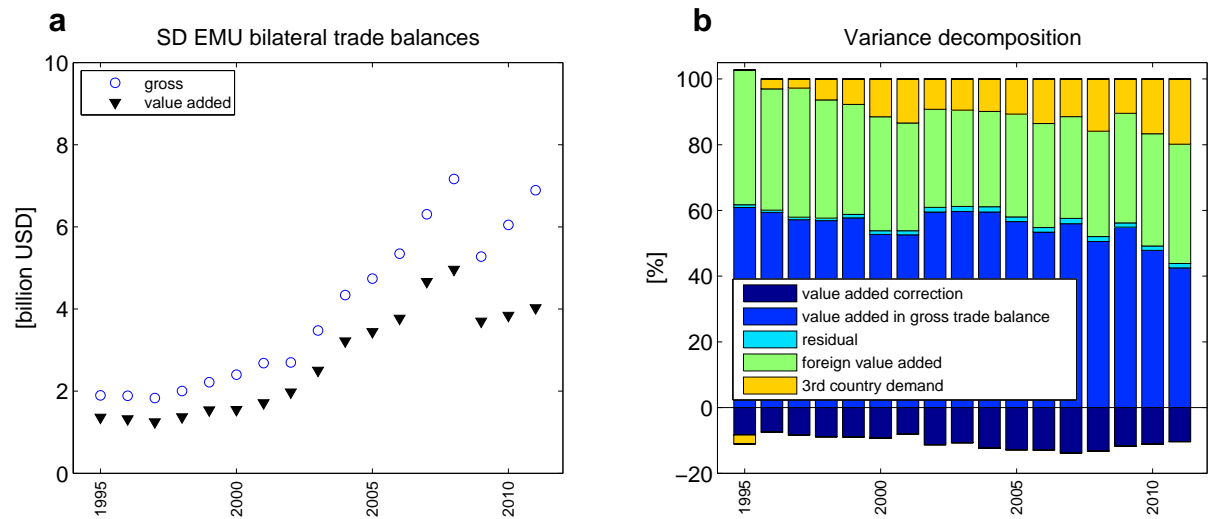


Figure 4: **Development of intra-EMU17 bilateral trade balances and their components.** a) Standard deviation of intra-EMU17 bilateral trade balances in gross and value added terms. b) Variance decomposition of intra-EMU17 bilateral gross trade balances.

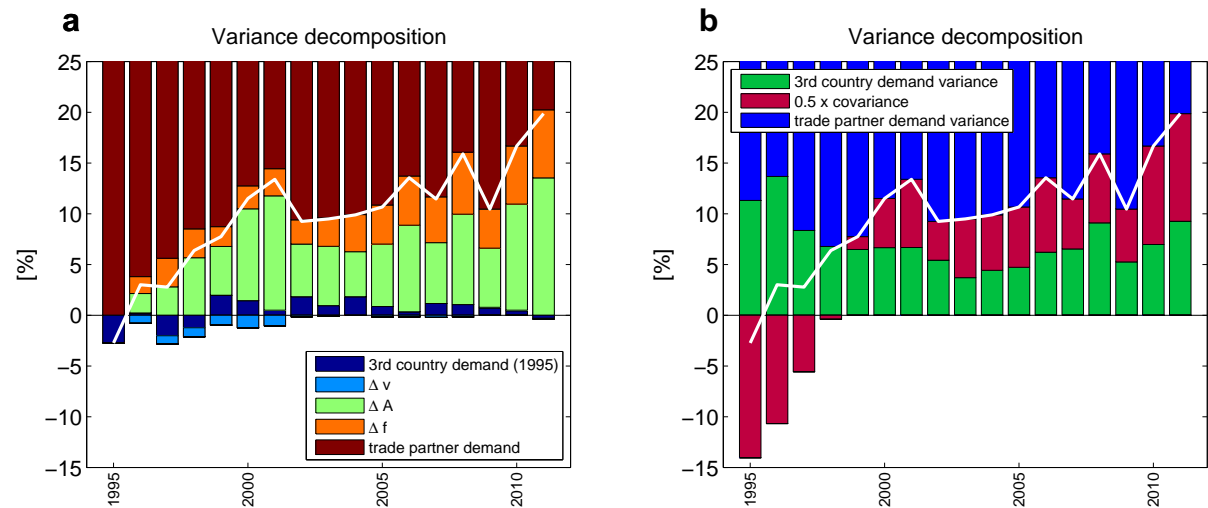


Figure 5: **Accounting for changes in the third country demand effect.** a) Structural decomposition analysis of intra-EMU17 bilateral gross trade balances decomposing the shift in the third country demand effect relative to the reference year 1995 into changes of final demand (Δf), international production sharing (ΔA) and value added content (Δv). b) Variance decomposition of intra-EMU17 bilateral gross trade balances into variance and covariance components of third country and trade partner demand. (White line - overall third country demand contribution.)

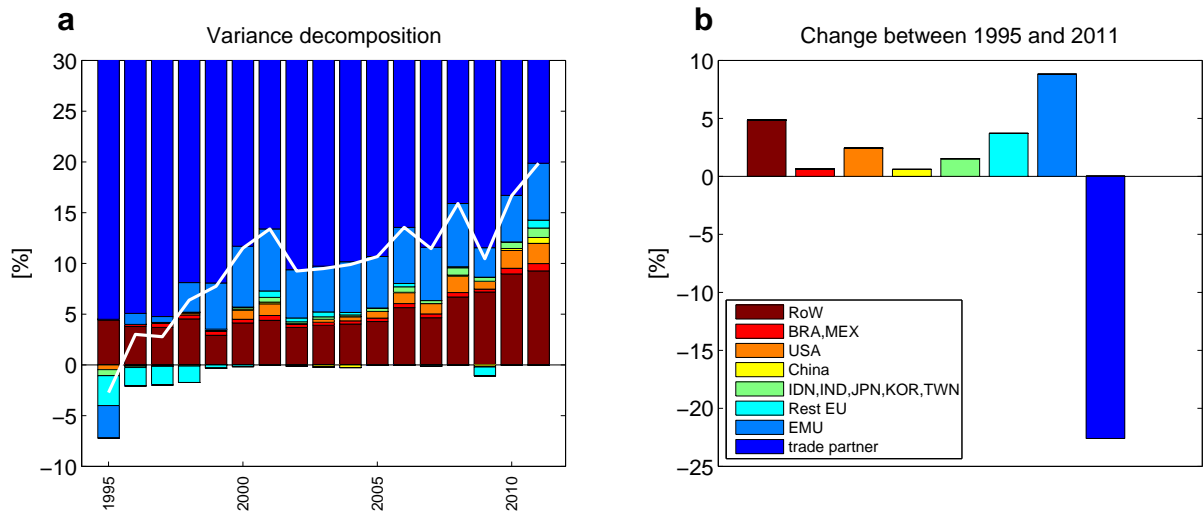


Figure 6: **Contributions of individual countries to intra-EMU imbalances.**

a) Variance decomposition of intra-EMU17 gross trade balances between 1995 and 2011 by country of final demand. b) Difference of individual country and regional contributions between 2011 and 1995. (White line - overall third country demand contribution.)

A.7 Comparison sink- and source-based approach

This section presents a short comparison of individual country and variance decomposition results for the sink- and source-based approach. By definition, the two approaches only differ with regards to the contributions of double counting terms and the part of the value added balance that coincides with the bilateral gross trade balance. Hence, the results pertaining to foreign value added and demand in third countries are unaffected by this methodological choice. Table 5 shows how domestic value added of the two trade partners which is absorbed by the respective trade partner (and hence in theory qualifies to be part of the value added balance) is split into being part of the value added balance and a double counting term. In general the double counting term differs appreciably in the two decompositions. However, in both cases the double counting term is quantitatively relatively small in comparison with the value added in the gross trade balance. Table 6 shows the results of the variance decomposition of intra-EU27 trade balances for both source- and sink-based decompositions. As before, the contribution of the double counting terms is discernibly different in the two approaches, but the absolute contribution is very small in both cases. In the source-based approach, the relatively small contributions of the double counting term reflects the fact that the share of domestic value added that is re-imported for further processing in the country of production and eventually re-exported for absorption in final demand by the direct trade partner is comparatively minor. Similarly, for the sink-based approach the double counting term is marginal since the value added of the direct trade partner that is re-exported and later re-imported for absorption in final demand is relatively small in comparison with the direct trade partner's value added that is directly consumed. In conclusion, although the two approaches are conceptually very different from each other, the quantitative differences are in general relatively minor and do not affect the conclusions drawn in the main text.

	domestic value added absorbed by respective trade partner	source-based approach		sink-based approach	
		value added in gross trade balance	double counting	value added in gross trade balance	double counting
<i>in million USD</i>					
NLD-DEU	11,240	11,131	109	10,809	431
DEU-FRA	23,499	22,461	1,038	23,678	-179
NLD-BEL	4,004	3,917	87	3,848	156
GBR-IRL	3,962	3,927	35	3,963	-1
NLD-ITA	11,232	11,118	114	11,195	37

Table 5: **Individual country results according to source- and sink-based decompositions.** Domestic value added (of one of the two trading partners) absorbed by the respective trade partner is subdivided into the part of the value added trade balance that coincides with the bilateral gross trade balance and a double counting term according to the source- and the sink-based approach. (Deviations from totals are due to rounding.)

	domestic value added absorbed by respective trade partner	source-based approach		sink-based approach	
		value added in gross trade balance	double counting	value added in gross trade balance	double counting
<i>in %</i>					
1995	62.53	61.62	0.92	62.63	-0.10
1996	61.11	60.31	0.79	61.22	-0.11
1997	59.43	58.63	0.80	59.49	-0.06
1998	59.01	58.15	0.86	59.11	-0.10
1999	59.58	58.57	1.01	59.77	-0.19
2000	55.55	54.50	1.04	55.67	-0.12
2001	54.43	53.44	0.99	54.49	-0.07
2002	62.29	61.08	1.21	62.49	-0.20
2003	60.21	58.93	1.28	60.41	-0.20
2004	59.99	58.49	1.50	60.28	-0.29
2005	55.73	54.42	1.32	55.91	-0.17
2006	52.60	51.26	1.34	52.75	-0.16
2007	55.65	54.09	1.56	55.94	-0.29
2008	50.00	48.69	1.31	50.14	-0.14
2009	51.39	50.36	1.03	51.51	-0.12
2010	46.52	45.35	1.17	46.59	-0.07
2011	41.27	40.12	1.15	41.23	0.04

Table 6: Variance decomposition of intra-EU27 imbalances according to source- and sink-based decompositions.
(Deviations from totals are due to rounding.)